

## ACCESSORIES

**SMB-1G, SMB-2G, SMB-3G, SMB-4G**  
**SMB-1W, SMB-2W, SMB-3W, SMB-4W**  
**Surface Mount Boxes**  
 (G-Gray, W-White)

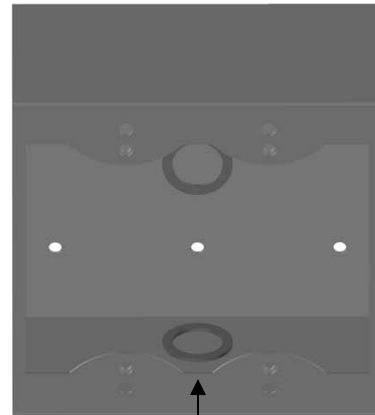
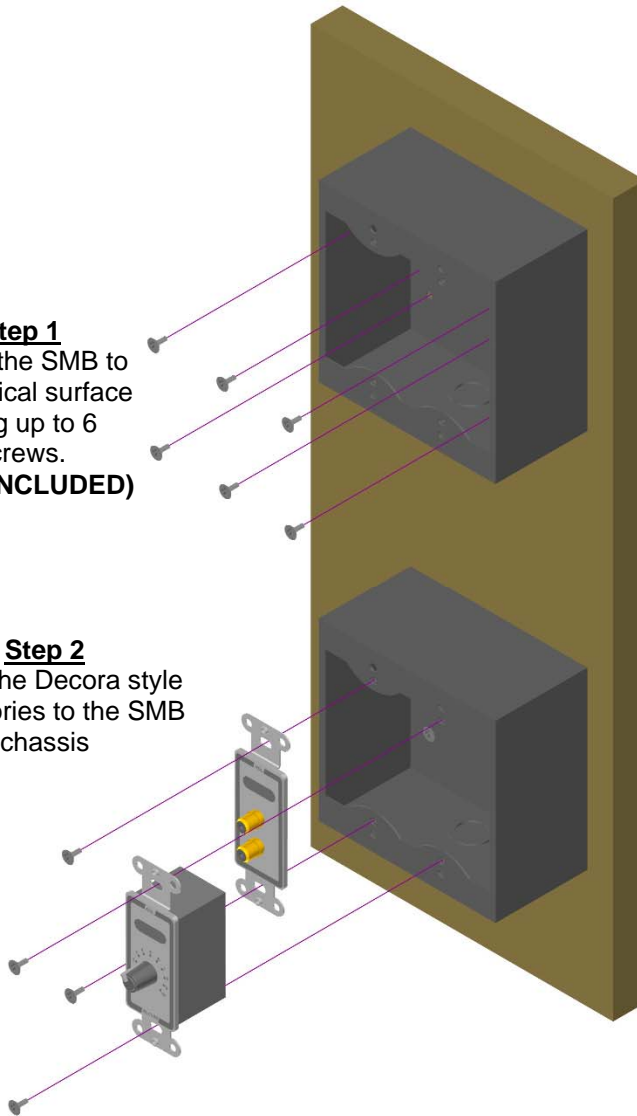
## Installation/Operation

**CE** EN55103-1 E1-E5; EN55103-2 E1-E4  
 Typical Performance reflects product at publication time  
 exclusive of EMC data, if any, supplied with product.  
 Specifications are subject to change without notice.

The SMB-1, 2, 3 and 4 surface mount boxes hold one, two, three or four Decora®-style products, including RDL remote controls and connector plates.

**Step 1**  
 Attach the SMB to the vertical surface using up to 6 screws.  
 (NOT INCLUDED)

**Step 2**  
 Attach the Decora style accessories to the SMB chassis



If using conduit, the SMB may be mounted with the knockout facing up or down. The small knockouts fit metric conduits; the larger knockouts fit US conduit.