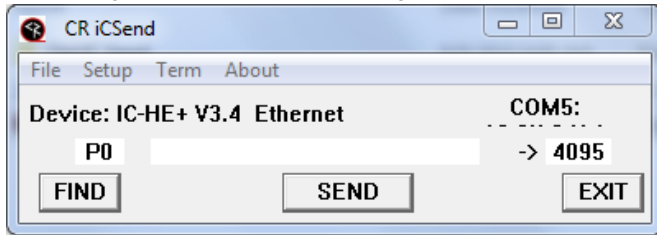
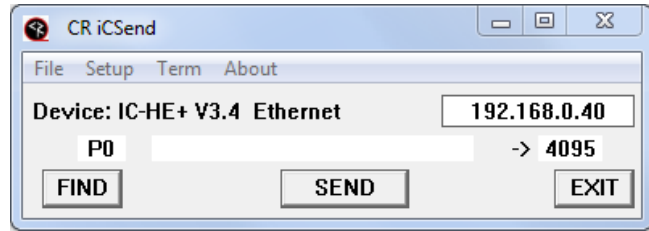


# IC Send

## RS-232/IP Tool for ICE-HE/ICE-HE-DXL Head Ends



Com Setting



IP Setting

**IC Send** is a Windows application for testing iCC-Net communication and control. It's simpler to use RS-232 for the ICE-HE and older ICC-HE Head Ends, and IP or RS-232 for the ICE-HE-DXL Display Control Center. Go to the [CR Website](#), select Products/Software, then IC Send. Select **Downloads** and download the ZIP file. Extract the folder and launch IC Send directly from the folder, no installation is required.

### IP Setup

For the ICE-HE-DXL, use the front panel red **SETUP** button and the **Network** menu to view its current IP address. If the unit is not on a network, connect a PC to the Ethernet port and set up a compatible TCPv4 static address. A crossover cable is not required. IC Send can also communicate over IP to the ICE-HE, but you will need to know the IP address in advance is), as there is no LCD display. The default IP address for Head Ends is 192.168.1.251.

- Select **Setup**, then **IP**.
- Enter the IP address of ICE-HE-DXL
- Enter P1 in the left field, nothing in the middle and enter device 1 on the right
- Watch the front panel of the DXL to view the TX/RX status under the N and click **SEND**
- For the legacy ICE-HE, use the FIND button to create a connection, IP TX/RX LEDs confirm communication

### RS-232 Setup

- Click **Setup** and select the **COM** port.
- Check that the Head End is set to 19,200 baud
- For the ICC-HE and ICE-HE, connect a null modem cable to the **Remote RS-232 port** and click **FIND** in ICSend. The app will confirm connectivity.
- For the ICE-HE-DXL, use the RS-232 DB9 connection on the back. Use the P1, 1 SEND test above to check RS-232 communication.
- If you have problems communicating, check that the ICSend.INI file in the folder is set to 19200.

### Entering Commands

- **Command:** Enter the command code in the first field.
- **Parameter:** Enter the parameter, if needed, in the second
- **Device:** Enter the device or Zone number for the controller(s)

Click **SEND** to send the command.

### Devices and Zones

To send a command to an individual controller, enter its unique address. To send a command to an entire Zone (up to 255 controllers) or all controllers, enter the address below.

Zone	Address	Zone	Address
All	4095	8	2048
1	256	9	2304
2	512	10	2560
3	768	11	2816
4	1024	12	3072
5	1280	13	3328
6	1536	14	3584
7	1792	15	3840

## Typical Commands

For a full range of commands, refer to the Product Manual.

Command	Description	
<b>All Controllers</b>		
<b>Power Off</b>	<b>P0</b>	P (Zero)
<b>Power On</b>	<b>P1</b>	P (One)
<b>Volume</b>	<b>VL</b>	Sets TV volume level 0 = Mute 1 – 63 = Minimum level (1) to maximum volume (63)
<b>Tune Analog</b>	<b>TC</b>	2-127
<b>HD Tuning</b>	<b>TH</b>	<Major>,<Minor> Example: TH then 15,1 tunes channel 15-1 (if TV has scanned channels)
<b>Tuning Style</b>	<b>H1</b>	1 = 5-digit CableCard style tuning (1-9999) 2 = Virtual HD Major-Minor tuning (tunes to virtual channel ID in display) 3 = Physical HD Major-Minor tuning (physical channel, minor digital)
<b>RS-232</b>		<b>ICC1-232, ICC2-ATSC series</b>
<b>RS-232 Control</b>	<b>T0</b>	Select control types for ICC1-ATSC4 series tuners, see manual for control type codes.
<b>Direct</b>	<b>UX</b>	Sends an RS-232 command directly to a display or projector through the controller's RS-232 port.  <i>Example:</i> UX 'mc 00 39',13 sends a toggling Captions On/Off command to an LG display.  ASCII character strings can be denoted by enclosing in single quotes (or double quotes if you actually needed the single quote character in the string). Hex bytes are denoted with a \$ symbol. Decimal characters are without quotes.
<b>Scan</b>		<b>ICC2-ATSC series</b>
<b>Scan Mode</b>	<b>D0</b>	Sets scan mode for digital and analog channels from the T^ or front panel scan command. 0= Scans for analog and digital channels scan (default) 1= Scans for digital only, deletes analog channels 2= Scans for digital only, keeps analog channels 3= Scans for analog only, deletes digital channels 4= Scans for analog only, keeps digital channels
<b>Channel Scan</b>	<b>T^</b>	Initiates channel scan
<b>IR</b>		<b>ICC1-IR, ICC2-IRC. ICC1-IRX</b>
<b>IR Code</b>	<b>T1</b>	Sets IR control code. Ex: T1 44 257. Check Manual or <a href="http://www.crwww.com">www.crwww.com</a> Select Product/Control, select the ICC1-IRX and download the manual.