

Coronis Fusion 6MP LED (MDCC-6430)

6MP diagnostic color display system



A pleasure for your eyes

Barco's Coronis Fusion 6MP features an exclusive LCD panel with the latest IPS technology, offering best-in-class image quality. Its high brightness and high contrast ratio help unveil the subtlest of details so you can make the most accurate diagnosis. Its large 30" screen real estate, wide aspect ratio, and full ACR compliance make this display the perfect fit for diagnostic imaging.

Boost your productivity

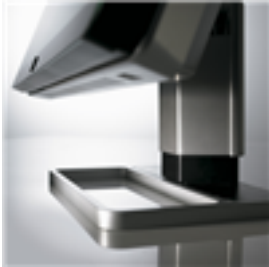
This display system comes with smart features that enhance control and productivity. Unique SpotView™ technology allows you to boost the luminance in a region of interest while dimming the surrounding image area so you can focus on more details more efficiently. Like all of Barco's medical display systems, Coronis Fusion 6MP comes with MediCal QAWeb, a cloud-based technology for automated calibration and Quality Assurance to ensure maximum uptime of the display with no need for human intervention.

BARCO

Visibly yours

Coronis Fusion 6MP LED (MDCC-6430)

6MP diagnostic color display system



Designed with ergonomics in mind

With Coronis Fusion 6MP, switching between workstations becomes a thing of the past. Especially designed for multimodality imaging, this diagnostic display combines CT, MR, orthopedic images, or any other combination on a single screen – for an uninterrupted workflow. You can use the single-head workstation as two bezel-free heads or as one wide-screen workspace. The choice is yours. Its widescreen, ergonomic form factor, wide viewing angle, and DimView™ feature (to automatically dim auxiliary displays) have been designed for the way you work and help you focus on the smallest image details.



A one-stop-shop solution

Barco medical displays include proprietary display controllers that are validated with the latest workstations and with all major PACS applications. All components are under the full 5-year warranty (including the display backlight) for complete peace of mind.



Product specifications**Coronis Fusion 6MP LED (MDCC-6430)**

Screen technology	IPS-TFT color LCD
Active screen size (diagonal)	772 mm (30.4")
Active screen size (H x V)	654 x 409 mm (25.8 x 16.1")
Aspect ratio (H:V)	16:10
Resolution	Native 6MP (3280 x 2048) Configurable to 2 x 3MP+ (1640 X 2048) Configurable to 2 x 3MP (1536 X 2048)
Pixel pitch	0.1995 mm
Color imaging	Yes
Gray imaging	Yes
Color support	30 bit
Viewing angle (H, V)	178°
Per Pixel Uniformity (PPU-LED)	Yes (color PPU)
Ambient Light Compensation (ALC)	Yes
Backlight Output Stabilization (BLOS)	Yes (2x)
I-Guard	Yes
Maximum luminance	1050 cd/m ²
DICOM calibrated luminance	600 cd/m ²
Contrast ratio (dark reading room, typical)	1500:1 (panel typical)
Response time (Tr + Tf)	18 ms
Housing color	Black / silver
Video input signals	DVI-D Dual Link (2x), DisplayPort (2x)
Video inout terminals	NA
USB ports	1 upstream (endpoint), 3 downstream
USB standard	2.0
Power requirements (nominal)	100-240V
Power consumption (nominal)	100W @ calibrated luminance of 600 cd/m ² 64W @ calibrated luminance of 400 cd/m ²
Power save mode	Yes (less than 0.5W)
Power management	DVI-DMPM, DP-DMPM
OSD languages	English, German, French, Dutch, Spanish, Italian, Portuguese, Polish, Russian, Swedish, Chinese (simplified), Japanese, Korean, Arabic
Dimensions with stand (W x H x D)	Portrait: NA Landscape: 731 x 528-628 x 259 mm
Dimensions w/o stand (W x H x D)	Portrait: NA Landscape: 731 x 485 x 140 mm
Dimensions packaged (W x H x D)	800 x 700 x 300 mm
Net weight with stand	20.5 kg
Net weight w/o stand	14 kg
Net weight packaged with stand	27.5 kg (without Display controller or Touch pad)
Net weight packaged w/o stand	NA
Height adjustment range	96 mm
Tilt	-5° / +25°
Swivel	-30° / +30°
Pivot	NA

Product specifications	Coronis Fusion 6MP LED (MDCC-6430)
Mounting standard	VESA (100 mm)
Screen protection	Protective, glass cover with anti-reflective coating
Recommended modalities	CT, MR, US, DR, CR, NM, PET
Certifications	CE0120 (MDD 93/42/EEC; A1:2007/47/EC class IIb product), CE - 2004/108/EC, IEC 60950-1:2005 + A1:2009, EN 60950-1:2006 + A1:2010 + A11:2009 + A12:2011 + A2:2013, IEC 60601-1:2005, ANSI/AAMI ES 60601-1:2005 + C1:2009 + A2:2010, CAN/CSA C22.2 No. 60601-1 (2008), EN 60601-1:2006 + A11:2011, EN 60601-1-2:2007, CCC - GB9254-2008 + GB4943.1-2011 + GB17625.1-2012, KCC, VCCI, FCC class B, ICES-001 Level B, FDA 510(k), RoHS
Supplied accessories	User Guide Quick Install Sheet Documentation CD System CD Video cables (2 x DVI Dual Link, 2 x DisplayPort) Mains cables (UK, European (CEBEC/KEMA), USA (UL/CSA; adaptor plug NEMA 5-15P), Chinese (CCC)) USB 2.0 cable External power supply
Optional accessories	Graphics board, touch pad
QA software	MediCal QAWeb
Units per pallet	NA
Pallet dimensions (W x H)	NA
Warranty	5 years, including 40.000 hrs backlight warranty
Operating temperature	0°C to 35°C (15°C to 30°C within specs)
Storage temperature	-20°C to 60°C
Operating humidity	8% - 80% (non-condensing)
Storage humidity	5% - 93% (non-condensing)
Operating altitude	3000 m