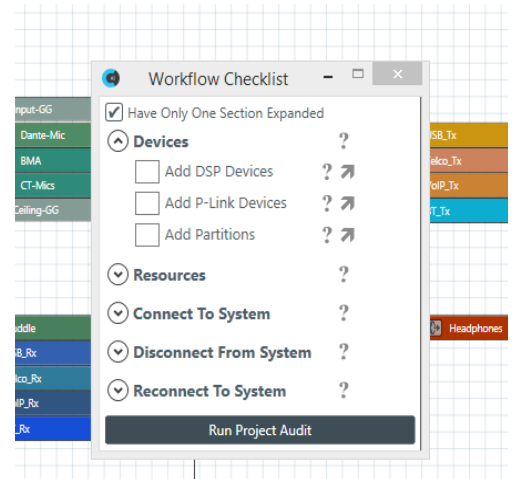
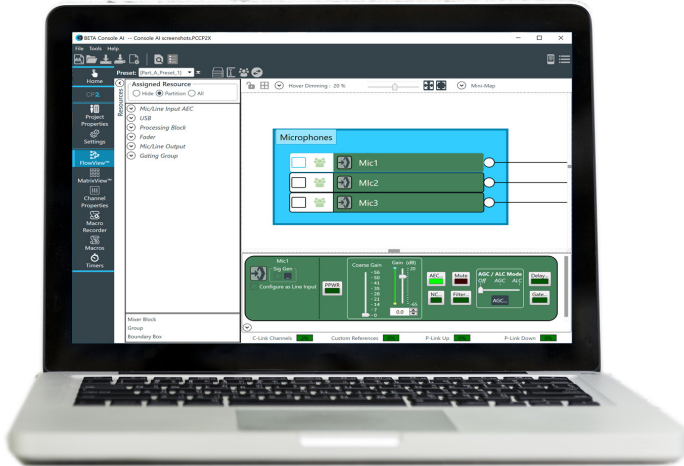


# CONSOLE® AI

Shipping November 15!



CONSOLE AI is the smart way to design a CONVERGE® Pro Audio system with *Audio Intelligence* built in – making AV practitioners more efficient by saving time.

### Never Miss a Step

A new AI Workflow Checklist guides you as you build your system to make sure that you never miss a step.

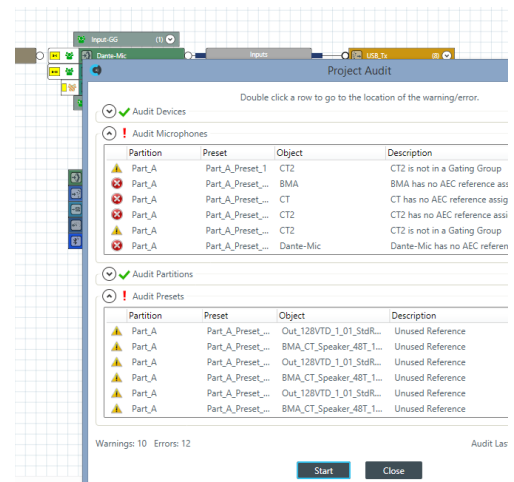
- > Enhanced visualization dramatically streamlines routing, design, and reviews. New visual language elements include drag-and-drop, boundary boxes, mixer blocks and custom routing lines.
- > Audio channel groups can be created – then expanded for detailed control or collapsed for simplified viewing and control.
- > In-line renaming allows you to change channel and channel group labels quickly without going to the Renaming Tool.
- > C-Link capacity increased to 150 channels, allowing larger systems to be created.
- > There are now two design modes—Simple and Advanced. Simple is for single-room designs, while Advanced adds the ability to create dividers and partitions.
- > Supports ClearOne’s latest devices: Versa Pro CT and Wall-Mount Bluetooth Expander.

### APPLICATIONS:

- Audio Conferencing
- Video Conferencing
- BYOD Conferencing
- Web Conferencing

### WORKSPACE DESIGNS:

- Executive Offices
- Huddle and BYOD Spaces
- Conference Rooms
- Multi-purpose Rooms
- Boardrooms
- Lecture Halls



### AI Checks Your Design

The innovative AI Project Audit checks your design and reports errors and warnings to alert you of potential problems.

Great Ideas Need to be Heard!™

# CONSOLE® AI

### PLATFORM

- Minimum screen resolution: 1024x768
- Requires .NET Framework 4.5.2 or later
- Requires approximately 140 MB of disk space for installation
- 1 gigabyte (GB) RAM (32-bit OS) or 2 GB RAM (64-bit OS) required
- Supports all Windows 7, 8, and 10 versions; both 32-bit and 64-bit.
- Languages supported: English, Spanish, German, Japanese, Chinese (Simplified), Korean, Brazilian Portuguese, Arabic, Russian
- Firmware supported: Versions 1.x through 4.x firmware update only. Versions 5.x and higher, full control to the extent of the capabilities of the firmware.

### REQUIRED NETWORK PROTOCOLS

- UDP and TCP packet data on port 3602
- mDNS (Bonjour)
- UDP data sent by broadcast and directed IP
- FTP file transference to and from devices
- FTP web server access for firmware/software updates
- Ports required:
  - 21 - FTP
  - TCP 4912 - Communication
  - UDP 3602 - Discovery

### INSTALLATION REQUIREMENTS

- CONSOLE AI may be installed on any Windows 7 (or greater) PC that meets the following requirements:
  - 1 gigahertz (GHz) or faster 32-bit (x86) or 64-bit (x64) processor
  - 1 gigabyte (GB) RAM (32-bit) or 2 GB RAM (64-bit)
- Running multiple instances of CONSOLE will allow multiple connections (one connection per instance of CONSOLE AI)
- Only one installation of CONSOLE AI can exist on a single computer
- CONSOLE AI can be installed “side by side” with any version of Pro CONSOLE
  - Pro CONSOLE and CONSOLE AI share the Dialer and the USB driver
  - If Pro CONSOLE or CONSOLE AI is uninstalled, Dialer will be uninstalled and possibly USB driver as well; requiring reinstallation of software to reinstate the Dialer and/or USB driver
- If CONSOLE AI is installed in a virtual machine, network card of the virtual machine must be set as Bridged, to replicate physical network connection state within virtual machine

### PRODUCTS SUPPORTED

- CONVERGE Pro 2 DSP Mixers and associated peripheral devices
- Huddle DSP Mixer and associated peripheral devices

### PART NUMBER

- SWR-1000-001 CONVERGE CONSOLE AI Software

## SALES AND INQUIRIES

### Headquarters

5225 Wiley Post Way  
Suite 500  
Salt Lake City, UT 84116

### US & Canada

Tel: +1.801.975.7200  
Fax: +1.801.303.5711

### International

Tel: +1.801.975.7200  
global@clearone.com

### Sales

Tel: +1.801.975.7200  
sales@clearone.com

### TechSupport

Tel: +1.801.974.3760  
tech.support@clearone.com