

Product Data Sheet

Boxilla - Enterprise Level KVM and AV/IT Manager

Overview

Boxilla is an Enterprise Level KVM & AV/IT system management platform that works with InvisaPC (DTX1002-R, DTX1002-T, DTX1000-R, DTX1000-T).

Boxilla provides a centralized, easy-to-use command center that gives you full monitoring and control of not just devices, but your entire system, all across the enterprise. Control user access. Monitor device status. Proactively diagnose and address network problems before they occur. Upgrade thousands of remote devices with one click, without ever leaving your seat, let alone the building.

Features

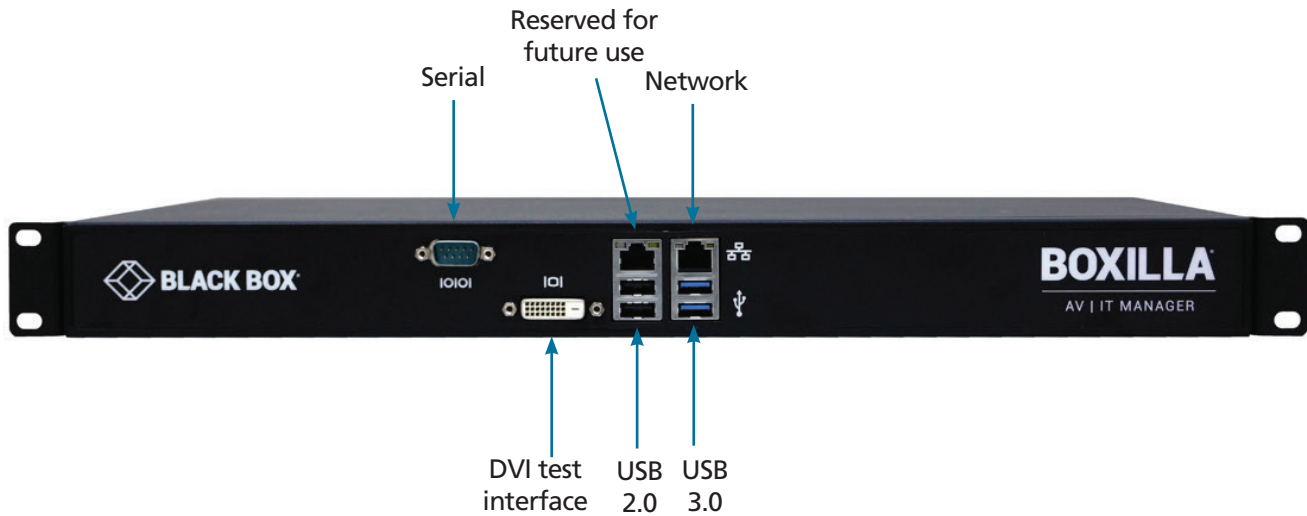
- Command center dashboard provides an instant snapshot of the KVM network.
- Manage an unlimited number of endpoints in your enterprise-level IP-based KVM system.
- Control deployments, monitoring, upgrades, troubleshooting, security, status—everything!
- Use with InvisaPC to provide a software based, future-proof solution!
- Provides management and unlimited device scalability for InvisaPC IP-based KVM systems.
- Deploy, monitor, and manage large-scale enterprise systems.
- Provides device discovery and configuration, user authentication.
- Target pooling—automatically assigned to next available system.
- Centralized upgrade of endpoint devices.
- Performance monitoring.



Specifications

Regulatory Approvals	CE, FCC, UL®, RoHS2
Connectors	10/100/1000 autosensing Ethernet, Serial, USB 2.0, USB 3.0
Power	AC input: 100–240 V, 50–60 Hz
1U Rackmount Chassis	19" wide, robust metal construction
Dimensions	System: 1.73"H x 17.3"W x 10.6"D (4.4 x 44 x 26.8 cm)
Weight	System: 10.96 lb. (4.98 kg); Shipping: 14.92 lb. (6.78 kg)
Compatibility	Works with InvisaPC; Future releases to support DKM

Front Panel of the Boxilla



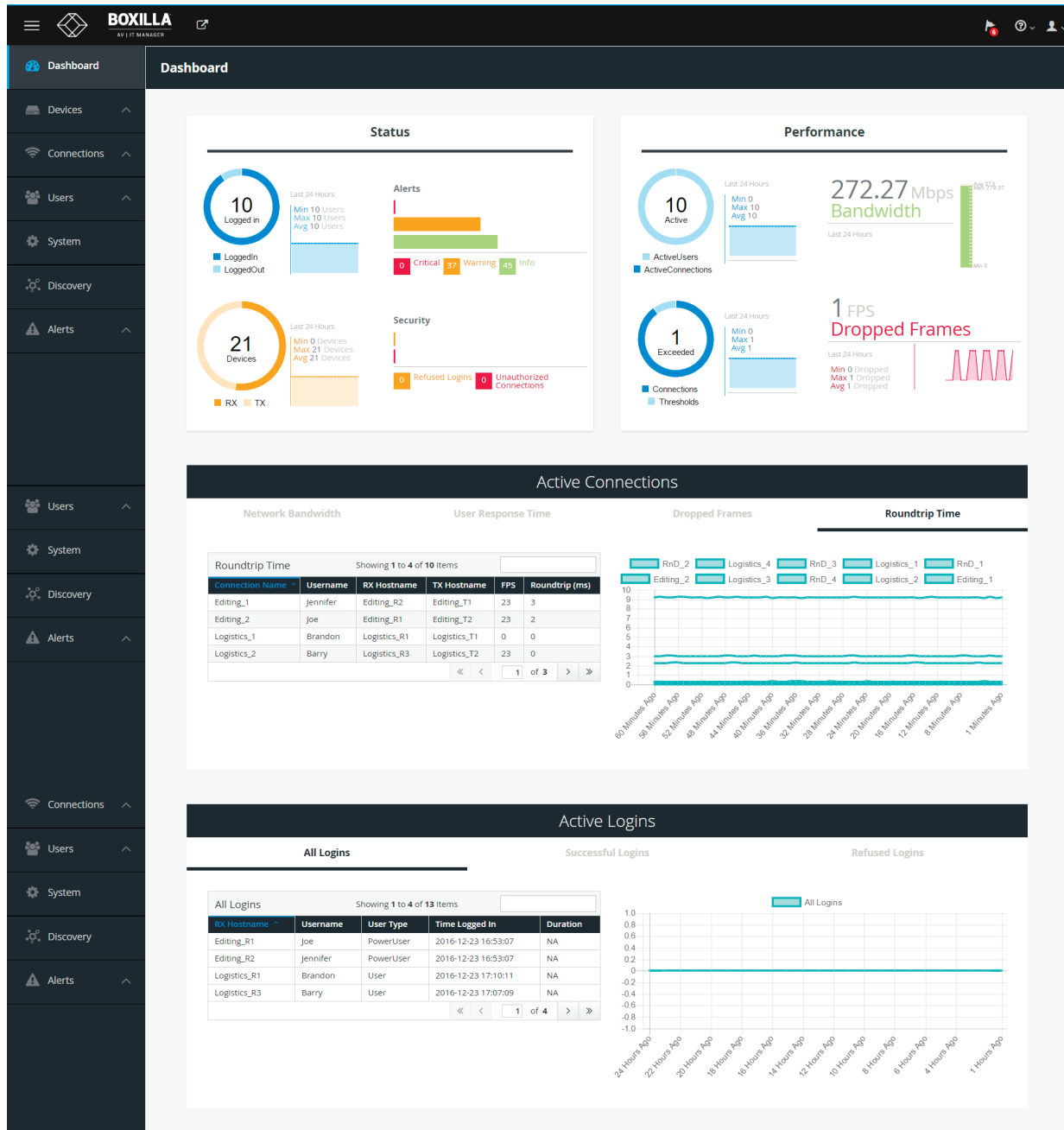
Back Panel of the Boxilla



TABLE 1. FRONT AND BACK PANEL COMPONENTS

COMPONENT	DESCRIPTION
Serial port	DB9 male console
Network port	10/100/1000 autosensing Ethernet RJ-45 connector
Power switch	ON/OFF switch
3-prong outlet	100–240 VAC, 50-60 Hz

Boxilla Dashboard



Dashboard drill-down:

Charting of key performance parameters:

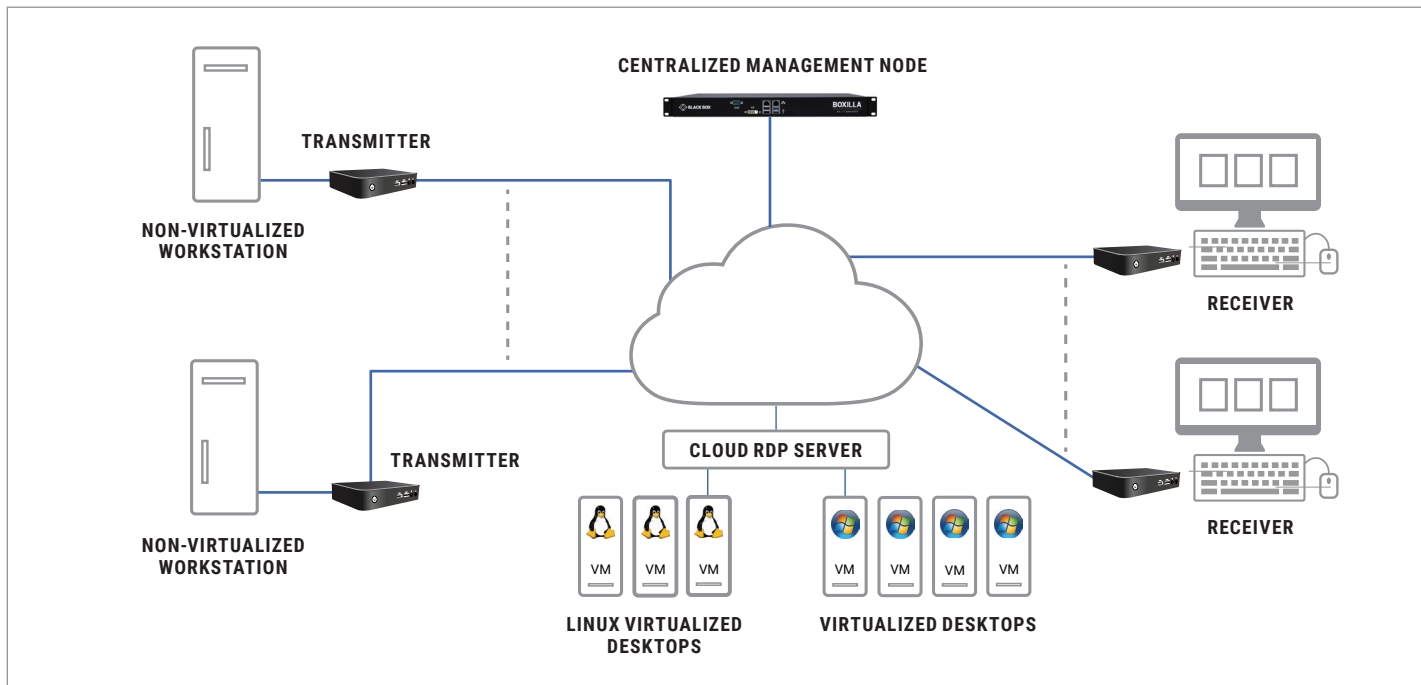
- Bandwidth
- Frame rate
- User changes
- Power

Configure and Create:

- Manage domains
- Users
- Connections
- Systems
- Groups

Boxilla - Enterprise Level KVM and AV/IT Manager Data Sheet

A typical application of the Boxilla is shown below.



Disclaimer:

Black Box Network Services shall not be liable for damages of any kind, including, but not limited to, punitive, consequential or cost of cover damages, resulting from any errors in the product information or specifications set forth in this document and Black Box Network Services may revise this document at any time without notice.

About Black Box:

Black Box is a leading technology product solutions provider that helps customers build, manage, optimize, and secure their networks. The Black Box quality management system is ISO 9001:2008 certified, and the company has received numerous industry recognitions. Black Box provides its customers with free, 24/7 pre- and post-sales technical support. The Black Box catalog and Web site offer an extensive range of infrastructure products including Cabling, Cabinets & Racks, Data Center Cooling Solutions, Power & Surge Protection, and Environmental Monitoring.

© Copyright 2016. Black Box Corporation. All rights reserved. Black Box® and the Double Diamond logo are registered trademarks of BB Technologies, Inc. Any third-party trademarks appearing in this publication are acknowledged to be the property of their respective owners.