

OPTIONAL ACCESSORIES

88321**8-3/4"H (5U) Utility Drawer w/Lock.**

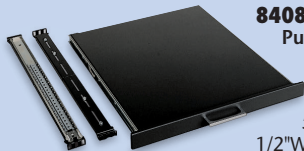
Rack mountable pullout drawer for tapes, power cords, connectors or tools. Fits in the base of 53011 only. Inside measurements: 8-3/4"H x 19"W x 21"D (222 x 483 x 533mm). Black.

88321 Shpg. wt. 18 lbs.

**84082****Pullout Shelf For 22-5/8"D Rack.**

Shelf extends 14" (356mm). Ideal for non-rack mountable electronics. Fits in the base of 53011 only. Size: 1-3/4"H x 16-1/2"W x 15"D (44 x 419 x 381mm). Black.

84082 Shpg. wt. 9 lbs.

**53273**

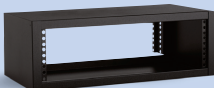
Rack Extension Module. Attaches to the slope of the Base/Slope Console (53011) and brings rack mounted electronics to the edge of the work-surface. 5-1/4" (3U) of rack space. 7-1/8"H x 21-1/16"W x 11"D (181 x 535 x 279mm). Black.

53273 Shpg. wt. 10 lbs.

**53266**

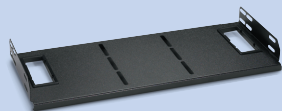
Rack Extension Module. Same as Model 53273 except supplies 21" (12U) of rack space. 22-1/2"H x 21-1/16"W x 6"D (572 x 535 x 152mm). Black.

53266 Shpg. wt. 25 lbs.

**53083**

Stationary Shelf for Top Module 53013. Two grommeted holes for cabling. Slotted for LCD hold-down clamps. 79"W x 7-5/8"D (2007 x 194mm). Black.

53083 Shpg. wt. 5 lbs.



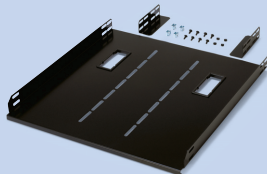
Hold Down LCD Bracket. 1/4" steel rod with plastisol coating. Use on 53083 and 53081.

85961 Shpg. wt. 1 lb.

53081

Stationary Shelf for Base/Slope Console 53011. 19"W x 20-1/8"D (483 x 511mm). Black.

53081 Shpg. wt. 10 lbs.

**F8152**

LCD Pivot Mount. Mounts to the top of Models 53011 or 53013. Uses 5-1/4" of rack space. Includes a vesa pivot bracket. 16"H x 16-1/2"W x 5-1/4"H (406 x 419 x 133mm). Black.

F8152 Shpg. wt. 7 lbs.

**53080**

Speaker Bracket. Mounts to the top and hangs on the side of models 53011 and 53013. Platform size: 6" x 6" (152 x 152mm). Black.

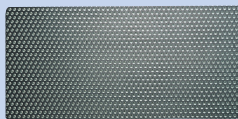
85782 Shpg. wt. 4 lbs.

**85744**

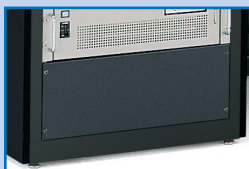
Black Rack Rail Trim. Use to cover unused rack rail holes. Trim can be cut to size with a scissors.

85744 Shpg. wt. .5 lb.

Vented Blank Panels. Black anodized steel.



86141	3-1/2"	(2U)
86142	5-1/4"	(3U)
86143	7"	(4U)
86144	8-3/4"	(5U)
86151	21"	(12U)

19"W Black Blank Panels.

99140	1-3/4"	(1U)
99141	3-1/2"	(2U)
99142	5-1/4"	(3U)
99143	7"	(4U)
99144	8-3/4"	(5U)
99145	10-1/2"	(6U)
99146	12-1/4"	(7U)
99147	14"	(8U)
99148	15-3/4"	(9U)
99149	19-1/4"	(11U)
99151	21"	(12U)
99152	24-1/2"	(14U)

Black Panel Bolts and Clips with captive nuts.

G8053	50 ea.	\$32.00
G8103	100 ea.	\$63.00

42752

Panel Channel Wiring Duct. Mounts inside console base for cable management. Size: 2"H x 4"W x 72"L (51 x 102 x 1829mm). Black.

42752 Shpg. wt. 2 lbs.

**10710**

10-Outlet Power Supply. 34" (864mm) long. On/Off switch and 15-amp circuit breaker. Mounts to the rear of the Base/Slope Console (53011).

10710 Shpg. wt. 4 lbs.

**98708**

Eight-Outlet Power Panel. Rack mount power panel with 15-amp circuit breaker. On/Off switch and 12' three-wire power cord.

98708 Shpg. wt. 4 lbs.

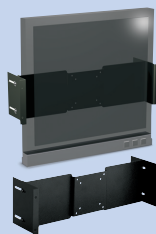


LCDs mount easily inside 19" wide EIA rack spacing with either bracket style.

92186

Black Flat Screen Mounting Bracket. Detachable mounting bracket makes installation quick and easy. Accommodates up to 19" flat screen (Maximum width 19").

92186 Shpg. wt. 4 lbs.

**F8150**

LCD Rack Mount Kit. Uses 17-1/2" (10U) of rack space. Swivel mounting can be adjusted up/down on mounting panel. Allows for tilting of LCD 30°. Accommodates up to 19" flat screen. Black.

F8150 Shpg. wt. 7 lbs.

