




### Professional Solutions - Unrivalled Value

Articulating arm holds screen 3.1" from wall and extends up to 15.7" for variable viewing angles. Smooth tilt adjustments of 15° forward and 5° back with a locking knob for a variety of viewing angles. 5° side to side roll for perfect screen positioning. Makes a secure installation quick and easy, simply hang the screen and turn the pre-assembled securing screw to lock in place. Integrated cable management for clean look.

 13"-46" / 33cm-117cm

 80 LB / 36 KG

#### ■ VESA Compatible

*Works with any hole pattern up to 400mm (15.7") x 400mm (15.7") in height.*

#### ■ Extendable

*Extends from 3.1" to 15.7".*

#### ■ Screen Size

*Fits most 13" to 46" flat panel screens weighing up to 80lb (36kg).*

#### ■ Tilt

*Pre-tensioned tilt mechanism allows for smooth tilt adjustment of 15° forward and 5° back.*

#### ■ Easy Installation

*Pre-assembled securing screw makes installation fast and easy.*

#### ■ Cable Management

*Integrated cable management for clean look.*

#### ■ Included Hardware

*Pre-sorted hardware pack for easy component selection and installation (hardware for installation to wood studs or concrete surfaces included).*

#### Functional Specifications

**Depth from wall:** 3.1" (79mm)

**Swivel:** 180° (3 joints)

**Tilt:** +15°/-5°

**Mounting Surfaces:** Wood stud, concrete & cinder block (with included hardware). Metal Stud (requires accessories).

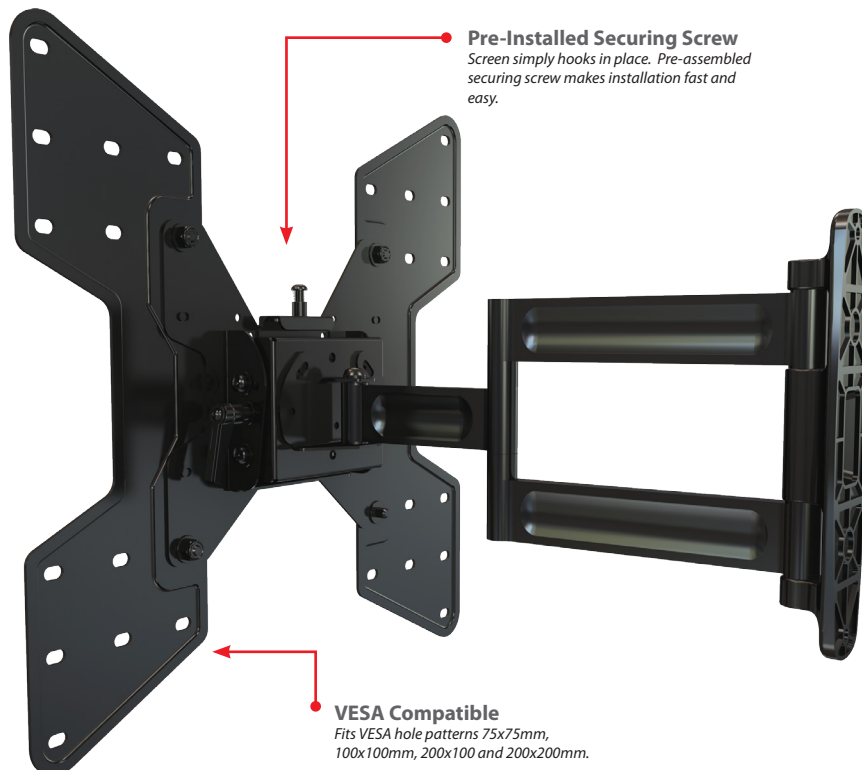
**Max Mounting Pattern:**

400mm (15.7") width

400mm (15.7") height

**Load Capacity:** 80 LB / 36 KG

**Warranty:** Limited 10 Years

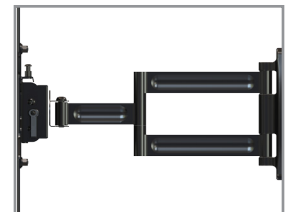


**Pre-Installed Securing Screw**  
*Screen simply hooks in place. Pre-assembled securing screw makes installation fast and easy.*

**VESA Compatible**  
*Fits VESA hole patterns 75x75mm, 100x100mm, 200x100 and 200x200mm.*



**Tilt**  
*Pre-tensioned tilt mechanism allows 15° forward and 5° backward tilt for optimal viewing angles.*



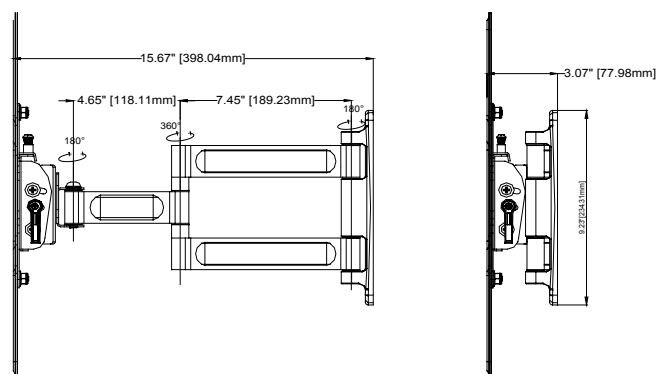
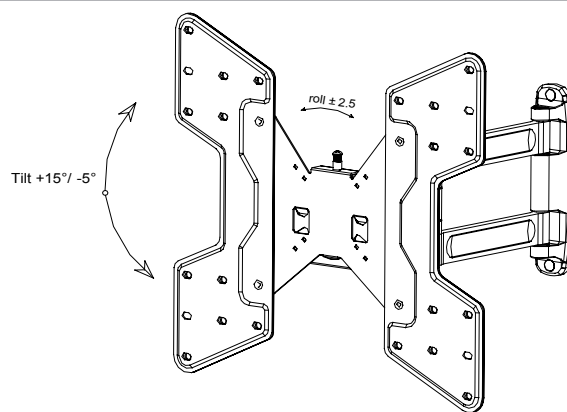
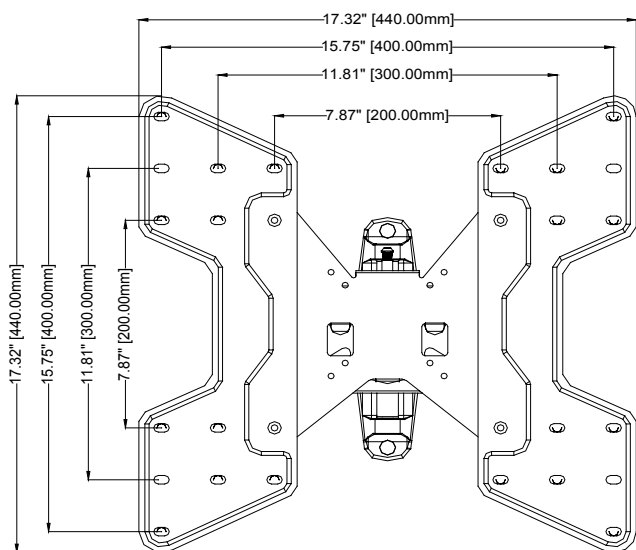
**Full Range of Motion**  
*3 pivot joints for variable viewing angles.*



# Full Motion Articulating Wall Mount

For 13" to 46" (33-117cm) LCD, LED and Plasma TV's

A46VF



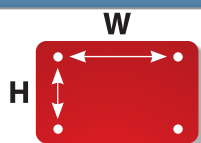
## Product Specifications

PRODUCT WEIGHT	LOAD CAPACITY	COLORS	FINISH
10.1lb (4.6kg)	80lb (36kg)	Black Silver	Scratch resistant powder coating

## Package Specifications

PACKAGE SIZE (WxHxD)	SHIP WEIGHT	UPC CODE	PACKAGE CONTENTS
20.3" x 9.6" x 5.1" (516 x 244 x 130 mm)	12.1lb (5.5kg)	A46VF (Black) 0815885010583	Mount, wall and screen mounting hardware, product manual.

## Mounting Interface



**Max Mounting Pattern**  
**400mm (W) x 400mm (H)**

<b>W</b>	75mm	100mm	200mm	200mm	300mm	300mm	400mm	400mm	400mm
	X	X	X	X	X	X	X	X	X
<b>H</b>	75mm	100mm	100mm	200mm	200mm	300mm	200mm	300mm	400mm

## Accessories

### Toggle bolts (for metal stud installation)



HT2 - 2 Pack  
HT4 - 4 Pack  
HT6 - 6 Pack

Use when installing into metal stud.

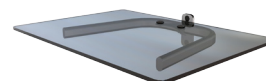
### On-wall Cable Management



WA1 - 1 Shelf  
WA2 - 2 Shelves  
WA3 - 3 Shelves

Component shelf and on-wall cable routing system. Hides cables inside internal channels for a clean look.

### Shelving



WF1 - 1 Shelf

Single-stud mountable component shelf.

Visit [crimsonav.com](http://crimsonav.com) to see the full line of vidamounts LCD/plasma, projector and TV/monitor mounts. © 2010 Crimson AV LLC. All rights reserved.

[www.crimsonav.com](http://www.crimsonav.com) | ph: 866.668.6888 | fax: 847.919.3483 | [support@crimsonav.com](mailto:support@crimsonav.com)